

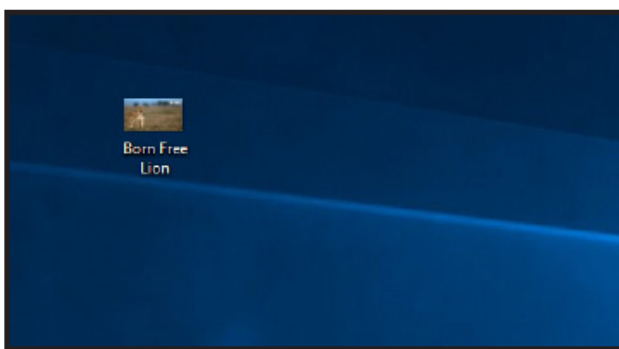
HOW TO WORK OUT THE NUMBER OF PIXELS IN YOUR IMAGE



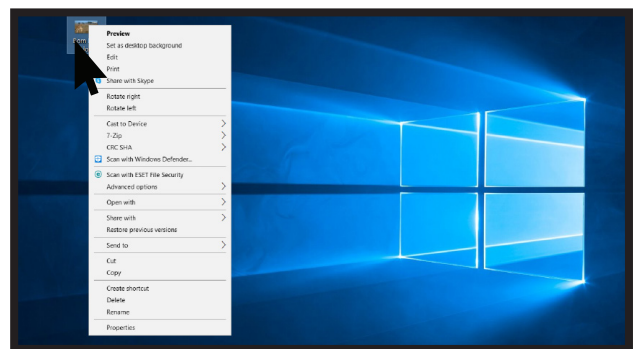
All images taken on a digital camera or smartphone are made up of thousands of tiny dots called pixels. Each pixel contains information about that part of the image. The more pixels in an image, the more information that image contains and the higher the image resolution. Too few pixels can make an image look blocky or pixelated. To enter our competition, please ensure your image is at least 2048 pixels on the longest side.

If you aren't sure how many pixels your image contains, follow this step-by-step guide¹:

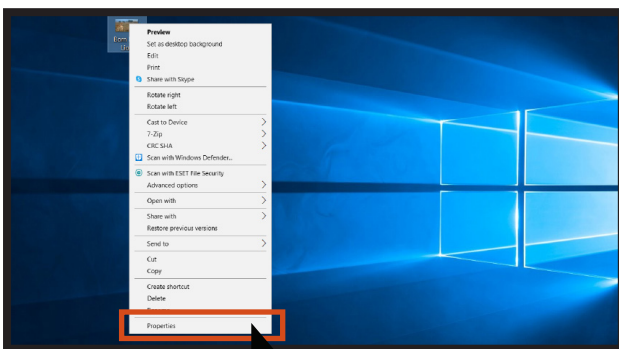
STEP 1 Find your image file.



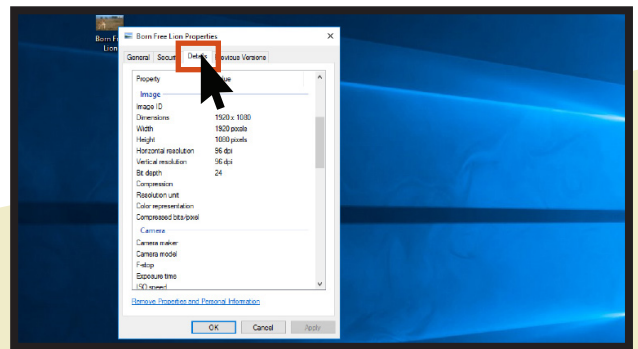
STEP 2 Right-click on the image to make a dropdown menu like this appear.



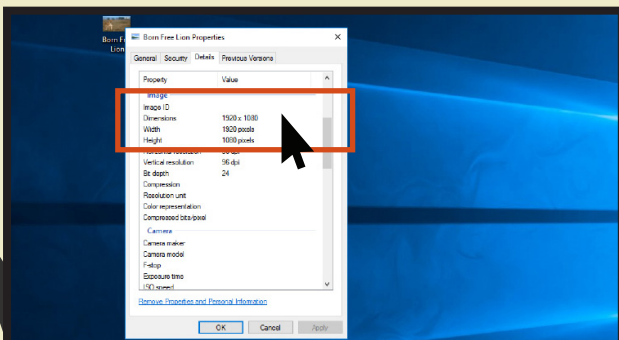
STEP 3 Click on Properties.



STEP 4 A box like this should appear. Click on Details at the top of the box.



STEP 5 Scroll down to Image. Here you will find the number of pixels on each side.



TOP TIPS

- Before taking any images, ensure your camera is set up to take the largest images possible, with the most pixels.
- If editing your image, do not compress or reduce the number of pixels in the final saved image.
- If you are scanning film negatives to make a digital image, remember to scan these at the higher resolution possible (largest number of pixels possible).
- If your image is very large, you can compress it down to 2048 pixels on the longest side for your entry submission, but please keep the original high resolution version as we may require this if you are selected



¹Please note, this step-by-step guide shows a Windows device, and may differ slightly if you are using an Apple or Android device.