

# NINE CREEPY-CRAWLIES YOU MIGHT SEE IN YOUR GARDEN

## How many can you spot?



**GREEN SHIELD BUG**



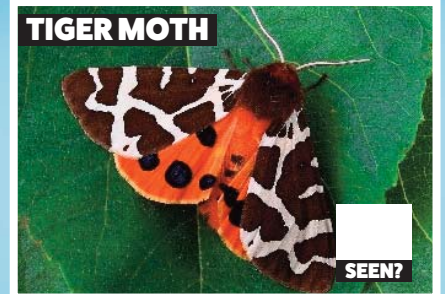
**Easy to see:** These slow bugs are usually quite easy to see on leaves – but remember, don't touch!

**HOVERFLY**



**A gardener's friend:** Attracted to yellow flowers, their larvae help to keep aphids under control.

**TIGER MOTH**



**What's in a name?** Shouldn't they be called a leopard moth? Where are their stripes?

**SNAIL**



**I'm not going to win any races:** Slow and steady, the common garden snail moves at just 45 metres per hour.

**LADYBIRD**



**How many spots?** The most common species of this colourful insect is the seven-spotted ladybird – how many can you find and how many spots do they have?

**BLACK ANT**



**A helping hand:** Ants live in colonies of up to 40,000 individuals and lay scent paths from food back to the nest so that other ants can also find it.

**BUMBLEBEE**



**Pollination power:** Keep your distance but watch how they move from one plant to another, pollinating flowers. This helps the plant produce seeds and fruit.

**CABBAGE WHITE**



**A flash of white:** Planting nasturtiums in your garden will attract these butterflies and can help to keep your cabbages safe by offering alternative food.

**SLUG**



**Don't judge by appearances:** Did you know slugs play a vital role in decomposition and returning nutrients to the soil?